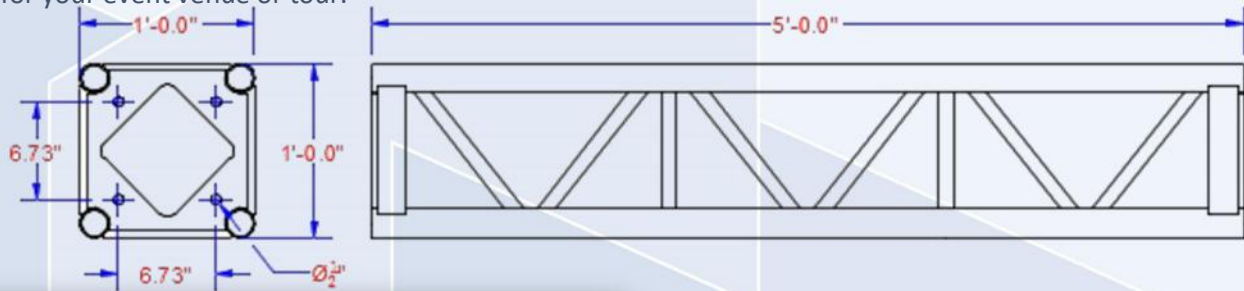
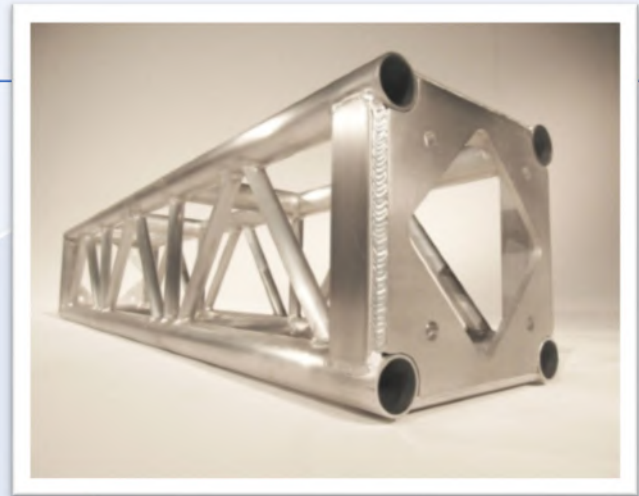




12" x 12" x 5' SILVER ALUMINUM BOX TRUSS

TB1205

Smartstage aluminum lighting truss, box truss, triangle truss, is designed and engineered with the life dependable welds, to perform to the highest standards. TUV and SGS certified worldwide, load tested and x-rayed for quality assurance. It is easy to install with integral design, simple bolt style connection, with numerous accessories, wedges, hinges, and corner blocks. It comes in multiple sizes and many available lengths and finishes, curved and angled, with a range of connection hardware available. Smart trusses can be configured to fulfill any creative structural concept you design for your event venue or tour.



ALLOWABLE LOAD DATA

12" TRUSS - STRAIGHT HORIZONTAL SPANS

No. of Sections	Span ^{1, 8} (ft)	Uniform Load ²			Maximum Allowable Point Loads ^{3, 4, 6}					
		Load (plf)	Total Load (lbs)	Deflection (in)	Center Point		Third Point		Quarter Point	
1	8	420	3360	0.12	845 ⁵	0.04	2 x 500 ⁵	0.02	3 x 360 ⁵	0.07
2	16	105	1680	0.49	845	0.32	2 x 500	0.10	3 x 360	0.47
3	24	47	1128	0.60	560	0.56	2 x 420	0.54	3 x 240	0.59
4	32	25	800	0.72	420	0.70	2 x 300	0.70	3 x 180	0.67
5	40	12	480	0.80	250	0.90	2 x 250	0.86	3 x 100	0.85

SPECIFICATIONS

- 12"H x 12"W, 5' long box truss, bolt connection. Generic fit to most standards.
- TUV - SGS certified. Load tested + inspected.
- Truss bolts sets available. In stock most truss sizes, ready to ship TODAY.
- Compatible with all other 12" truss lengths, curves, angled corners, base mounts, hinges and corner blocks.
- Box shape, four round tubes, OD of 2" with a wall of .125", diagonal 1" .125 wall.
- Welded to TÜV standards, 6061-T6 alloy, using #5356 rod, using TIG hand weld process.
- Weight: 35lbs (15.88kg) approx.
- Finish: Natural aluminum powder coating available.

Get started with Smartstage today!

Smartstage Corporation

2510 E Sunset Rd., Unit 5-222
Las Vegas, Nevada, 89120-3511

Email: sales@smartstage.com

Phone: 702-951-9585

Fax: 954-919-1503

Smartstage strongly recommends that you engage the services of the licensed engineering professional to analyze complex loading configurations and/or conditions.